



**CRANES·SPREADER·COMPONENTS**



**CRANES·SPREADER·COMPONENTS**

🌐 [www.gbcranes.com](http://www.gbcranes.com)

✉ [inquiry@clescrane.com](mailto:inquiry@clescrane.com)

📍 Workshop 3, HengTian Industrial Park,  
No.16, Yinping Road, High-tech  
Development Zone, Zhengzhou City,  
Henan Province, China.





# GB

CRANES-SPREADER-COMPONENTS

Founded in March 2020, we are the manufacturing plant of CLESCRANE. We are qualified to produce cranes up to 200 tons. Our mission is to transform drawings into qualified products. Your excellent experience and ultimate perfection are the result of our production team's deep understanding of excellence and meticulous craftsmanship. We strictly adhere to American Standard design and production standards, meticulously polishing every crane, every panel, and every spreader, never sacrificing the future for short-term profits.



ENGINEERED WITH PRECISION  
PROVEN SOLUTIONS  
CUSTOMER-TRUSTED



# ONE CLESCRANE

 **GBCRANES®** 2020

SPREADER MANUFACTURING  
CRANES COMPONENTS ASSEMBLY  
ELECTRIC CONTROL CABINET ASSEMBLY

 **CLESCRANE®** 2013

PRODUCT DESIGN  
SOFTWARE DEVELOPMENT  
SALES

 **INAMAR®** 2023

ENGINEERING CONSULTING  
AND MANAGEMENT

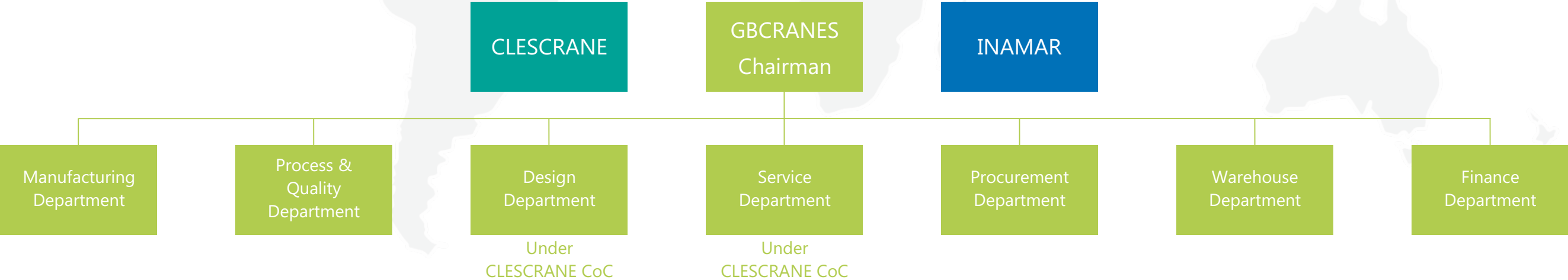


# ORGANIZATIONAL STRUCTURE

CLESCRANE SYSTEM CO., LTD.

GBCRANES INTELLIGENT MATERIAL HANDLING MACHINERY CO.,LTD.

INAMAR (ShangHai) PROJECT MANAGEMENT & CONSULTING COMPANY





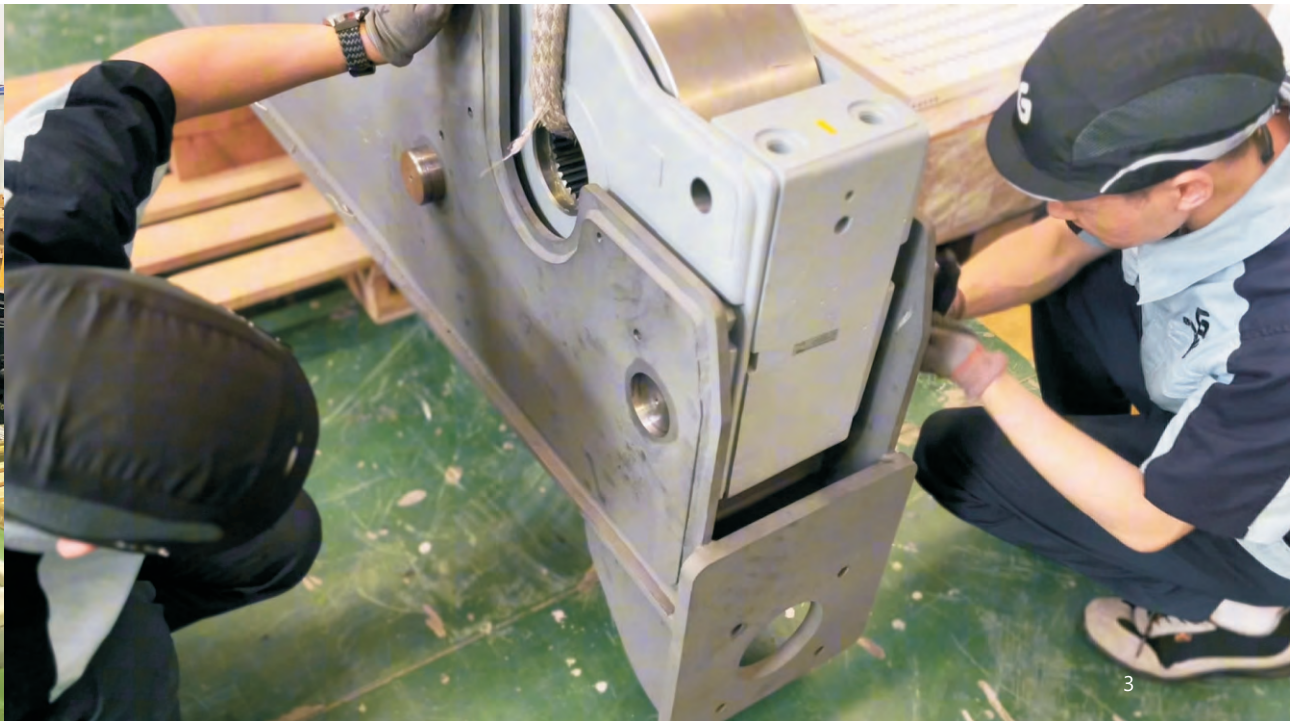
# OUR MANUFACTURING

## | GBCRANES

At GBCRANES, we view manufacturing as a careful and meticulous long-term process. Every crane - from structure and hoist to electrical systems and final assembly - is completed in our factory under standardized procedures, with attention to materials, welding, and assembly details to ensure durability and stable performance.

Before delivery, each unit undergoes strict quality control, electrical testing, and commissioning. The cranes are ready for "plug-and-play" operation on site, requiring no additional wiring or adjustment, greatly reducing installation time and downtime. We uphold a philosophy of reliability, practicality, and easy maintenance, ensuring our equipment delivers long-term stable performance in our customers' operations.

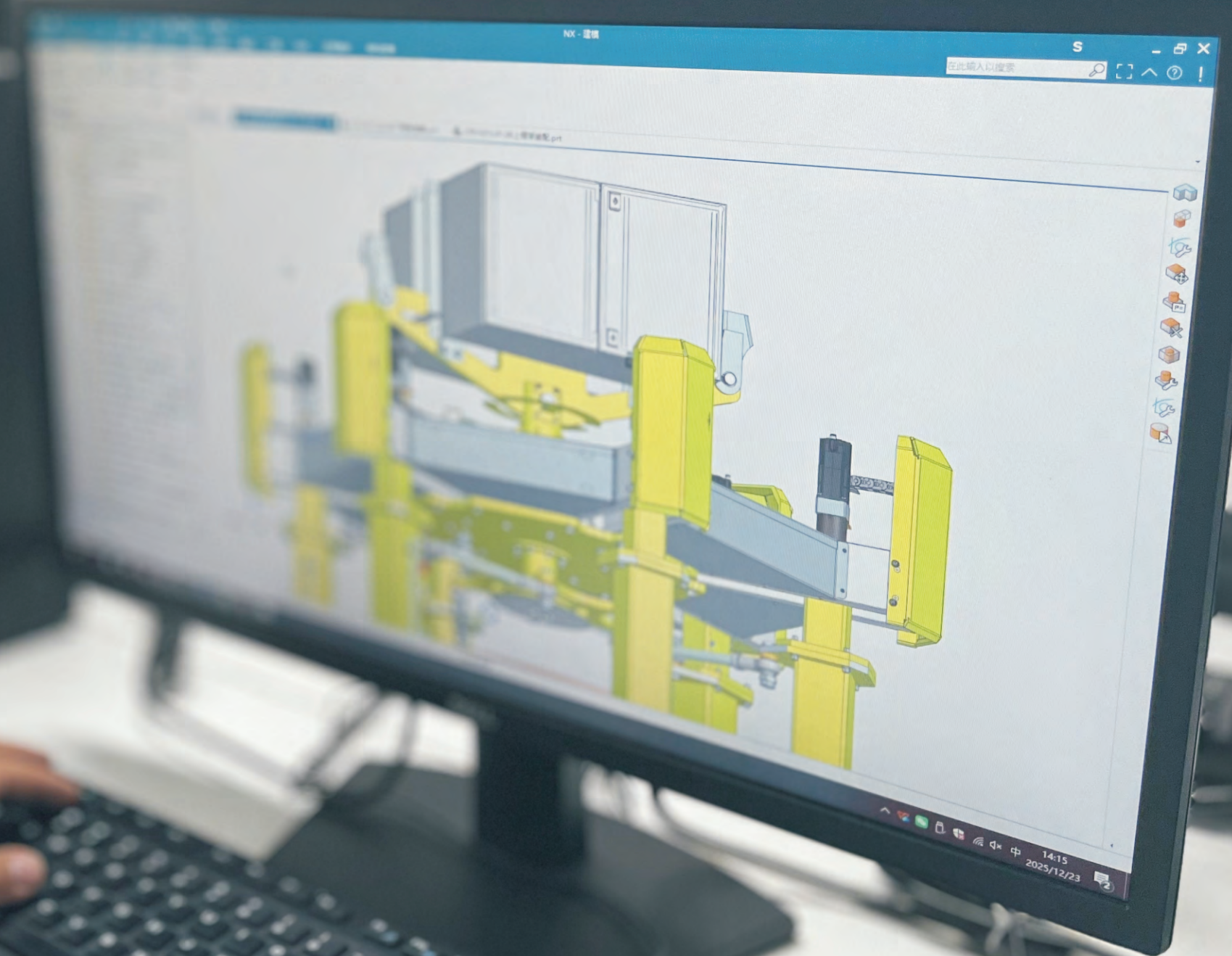
- 1. Machining
- 2. Hoists & winches assembly
- 3. Spreaders assembly
- 4. End carriages assembly
- 5. Crane basic control assembly
- 6. Pre-delivery testing
- 7. Paper rolls crane assembly



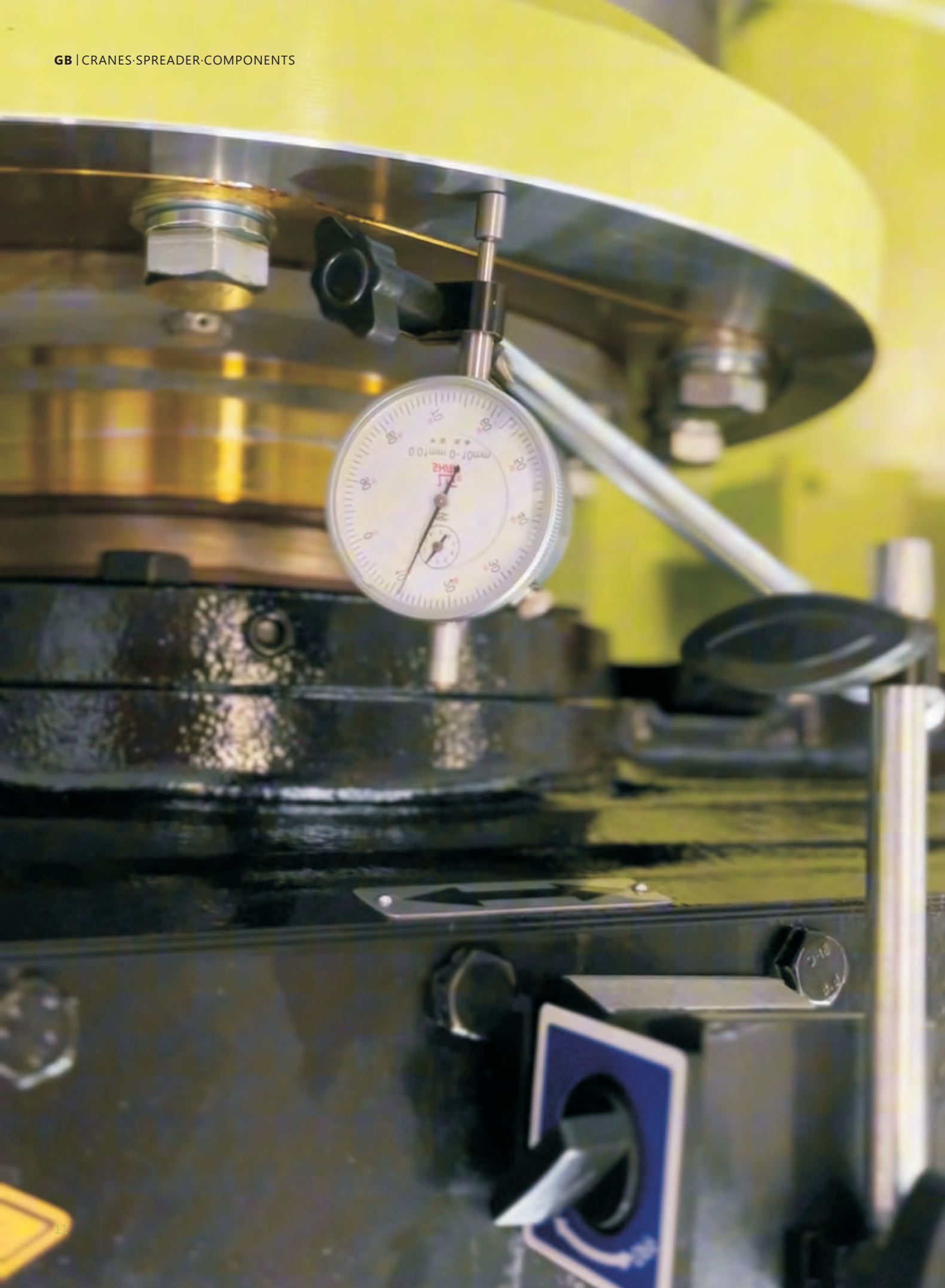


# ADVANCED TECHNOLOGY

At GBCRANES, we combine innovative technology with proven, time-tested designs to deliver bridge cranes, wire rope hoists, special lifting devices, as well as crane components and electrical systems. Intelligent controls ensure precise operation and smooth performance, while robust construction guarantees long-term durability. Every system is rigorously tested to make your lifting operations more efficient and worry-free.







# QUALITY

At GBCRANES, quality is our baseline. Every crane and component is carefully designed and rigorously tested to ensure safety, durability, and smooth operation. Our equipment is CE-certified and meets CMAA standards, giving you worry-free performance. With a 36+ months warranty and global technical support, your lifting operations run more efficiently and effortlessly.





# SPECIAL SPREADERS

**Paper rolls grippers**  
Paper rolls storage warehouse management

**Electric straw bale yoke**  
Straw bales loading/unloading system

**Load turning device**  
Turning of moulding boxes up to 100 t - safe and efficient

**Tunnel concrete segment**  
Tunnel Segments Handling



# CRANE KITS

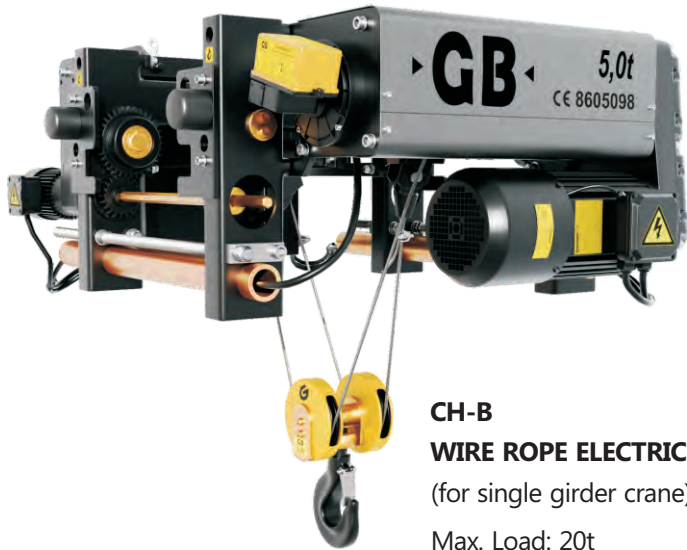
From 1t up to 320t



**CH-B**  
**WIRE ROPE ELECTRIC HOIST**  
(for double girder crane)  
Max. Load: 100t



**CH-R**  
**MONORAIL HOIST**  
Max. Load: 50t



**CH-B**  
**WIRE ROPE ELECTRIC HOIST**  
(for single girder crane)  
Max. Load: 20t



**CW**  
**OPEN WINCH**  
Max. Load: 320t



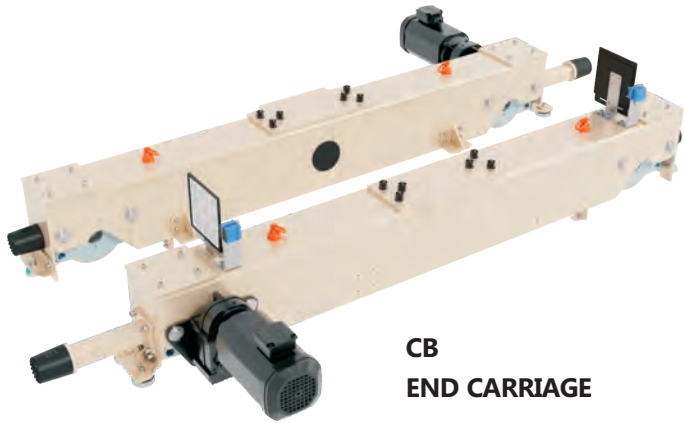
**CH-G**  
**FIXED HOIST**  
Max. Load: 100t



**CHEX**  
**EXPLOSION-PROOF**  
**ELECTRIC HOISTS**  
(for single girder crane)  
Max. Load: 20t



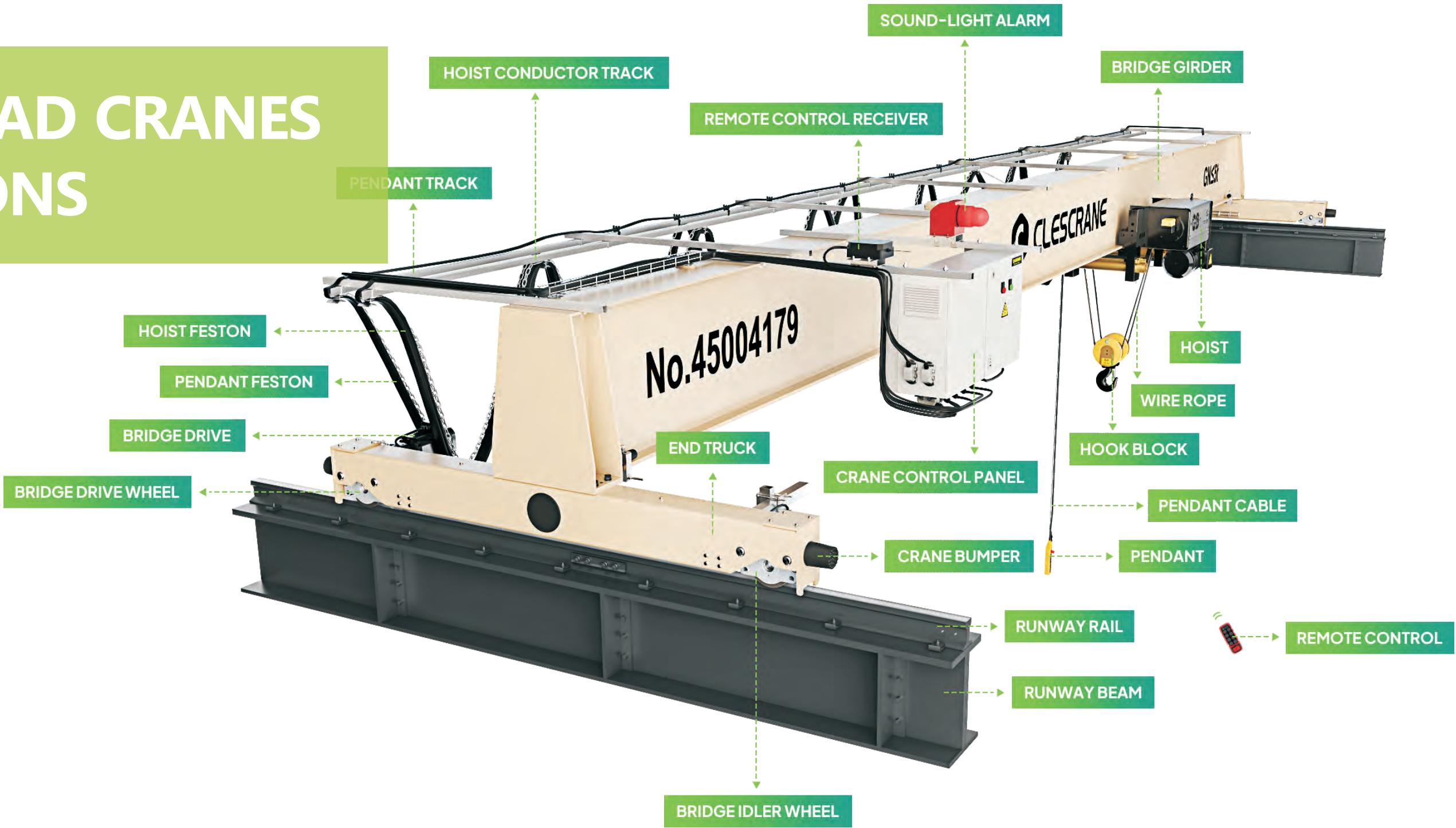
**CHEX**  
**EXPLOSION-PROOF ELECTRIC HOISTS**  
(for double girder crane)  
Max. Load: 63t



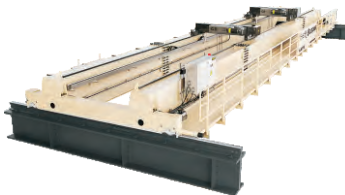
**CB**  
**END CARRIAGE**



# OVERHEAD CRANES SOLUTIONS



**CHS**  
SINGLE GIRDER  
OVERHEAD CRANE  
Max. Load: 20t



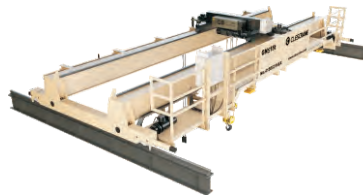
**CHD**  
DOUBLE GIRDER  
OVERHEAD CRANE  
Max. Load: 100t



**CHU**  
SUSPENSION CRANE  
Max. Load: 10t



**EX-CHS**  
SINGLE GIRDER  
EXPLOSION PROOF CRANE  
MAX. LOAD: 20T



**EX-CHD**  
DOUBLE GIRDER  
EXPLOSION PROOF CRANE  
MAX. LOAD: 63T



**EX-CHU**  
EXPLOSION PROOF  
SUSPENSION CRANE  
MAX. LOAD: 10T



**CWD**  
OVERHEAD CRANE  
WITH OPEN WINCH  
MAX. LOAD: 320T



# ELECTRICAL CONTROL SYSTEMS

CRANE ELECTRICAL CONTROL BOX

CRANE ELECTRICAL CONTROL CABINET

RCOS REMOTE CONTROL SYSTEM



# ***SPARE PARTS***

We are the equipment manufacturing factory of CLESCRANE. Our services are completed in cooperation with CLESCRANE. As a factory, our most responsible behavior to customers is to strictly follow the process requirements for equipment processing, assembly, testing and quality control. Our CLESCRANE can provide a complete maintenance manual. We can ensure a stable supply of spare parts. Manufacturing is our strength. Please feel free to choose GBCRANES products.





# ***PARTNER TRAINING***

We provide hoist products and crane maintenance training for CLESCRANE's service partners overseas, enhancing services and promoting the business development of our users.



# RELIABLE PARTNER

Supply chain management is particularly important to GBCRANES. We choose these European brand suppliers because of their strong global sales and service networks, as well as their high-quality components, which enhance the competitiveness of our products and ensure reliable quality.

